



MC-Fix-ST

Ready to Use Quick Stopper Plug for Leakages

Product Properties

- Quick water sealing material
- Polymer modified ready to use
- Sets hydraulically without shrinkage
- Chloride free and does not saponify over a period of time
- Not sensitive to frost

Areas of Application

- Can be employed everywhere, where a quick and reliable sealing is necessary even against water pressure
- **MC-Fix-ST** is indispensable while carrying out waterproofing jobs, especially where continuous seepage of water hampers application of waterproofing treatments
- Suitable where very dry surfaces are required, e.g. In basements, wet areas, masonry walls, water towers, etc.

Application Notes

General

MC-Fix ST is an unsurpassed, quick water sealing material for the repair of leaks, water seepage in cellars, shafts, tunnels, basements etc.

MC-Fix-ST is a polymer modified ready to use mortar for quick and reliable sealing and plugging of leaks. Only water is to be added at the site to get the plugging mortar. The mortar plug develops very high strength and is stone hard within about 5 – 7 minutes. The waterproofing and bonding properties are excellent and the sealing is permanent.

MC-Fix-ST sets hydraulically without shrinkage. The mortar is chloride free and does not saponify over a period of time. In case of larger leaks, it is advisable to start plugging at the top point of leakage and work downwards.

Advantages

MC-Fix-ST sets hydraulically without shrinkage. Also, it is not sensitive to frost action and has a permanent sealing action.

MC-Fix ST is normally used where there is continuous seepage of water is observed and any other waterproofing treatment is redundant in that case.

Instruction for use

The application is simple. First chisel the crack or leakage spots to prepare them in dovetail fashion, so that perfect bond can be guaranteed when the water pressure acts in reverse direction.

Remove loose particles and dust. Mix **MC-Fix-ST** in small amounts with water, knead it into a paste and mould it in to a plug shaped mass. Hold it immediately against water leak in the prepared joint and press until the plug sets (about 5 – 7 minutes). Setting time can be accelerated using hot water.

In cases of larger leaks, which require more than one plug, it is recommended to commence plugging at the top of the leak aperture and work downwards until completion.

If prepared **MC-Fix-ST** shows signs of hardening before plugging,

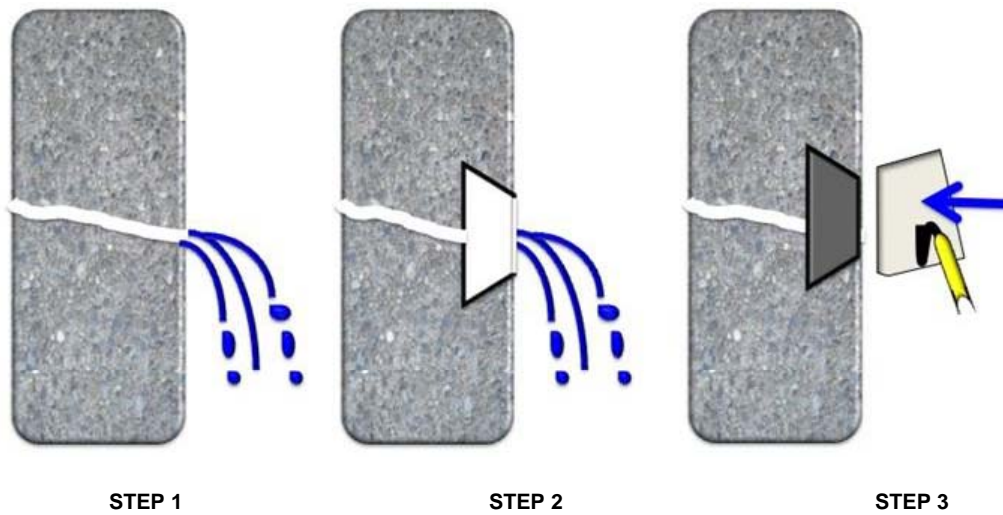
it must not be considered for further use. Addition of water in this case is not permissible.

If temperatures, while preparing **MC-Fix-ST** fall below +8°C it is advisable to add warm water.

Procedure for Application of **MC-Fix-ST** is shown in Table below.

Further Instructions / Precautions

Application of MC-Fix-ST



Step 1: Identify Leakage Spots

Step 2: Cut a dovetail joint into the leak to Guarantee perfect bond of MC-Fix-ST to Substrate

Step 3: Make a plug of MC-Fix-ST and water and fill the dovetail joint to permanently plug leakage

Technical Data For MC-Fix-ST

Characteristic	Unit	Value	Comments
Pot Life	Minutes	5 to 7	Hardens on mixing
Mixing ratio	-	-	As per consistency required

Product Characteristics for MC-Fix-ST

Type of Product	Ready to use quick stopper plug for leakages
Form	Powder
Colour	Grey powder
Shelf Life	6 months from date of Manufacture
Delivery	30 Kg Sacks
Storage	In Unopened Packaging. Protect from Rain, Direct Sunlight, Heat and Frost
Disposal	Empty packs completely and dispose off carefully to protect our Environment

Note: The information on this data sheet is based on our experiences and correct to the best of our knowledge. It is, however, not binding. It has to be adjusted to the individual structure, application purpose and especially to local conditions. Our data refers to the accepted engineering rules, which have to be observed during application. This provided we are liable for the correctness of this data within the scope of our terms and conditions of sale-delivery-and-service. Recommendations of our employees, which may differ from the data contained in our information sheets, are only binding if given in written form. The accepted engineering rules must be observed at all times. E. & O.E.

Older editions are invalid and may not be used anymore. If a technically revised new edition is issued, this edition becomes invalid.

Edition: January 2013